

DOCUMENTARIES ON INTRODUCTION TO JAPAN

Continuous Screening on 21st and 22nd December from 11 am to 7 pm



Spring – Blooming
Cherry Blossoms



Autumn – Brilliant
Fall Colours



Okinawa World
Heritage



Kamakura – Home
of Samurai Culture



Mt. Fuji, Japan's
Sacred Mountain



Miyajima - Island
Shrine to Nature



Sky Tree – Tokyo's
Latest Landmark



Shinkansen – High-
speed Rail System



Hina-Ningyo Dolls



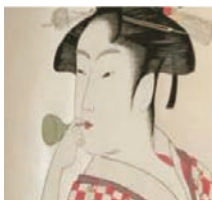
Technology Inspired
by Tradition



The Spirit of Budo



The Puppet Art of
Bunraku



The Ukiyoe
Tradition



A Festival of
Festivals – Tohoku
Rokkon Sai



School Events



Miniaturizing
Medicine